

Antistatic polyurethane hose, medium-heavy, microbe resistant, flame-resistant

Application

- flexible hose/ ducting for abrasive powder, bulk material, granulate and for gases
- printed circuit board drilling machine (PCB)
- offset printing machine: air supply, air supply cabinet
- air supply: UV dryer, IR dryer
- extraction unit, dedusting system, filter system, oil mist extraction
- chemical industry: chemical vapours, vapour return hose at loading arm, paint steam, spray mist extraction
- explosion hazard area
- textile industry, fiber extraction: spinning machine, knitting machine, weaving loom machine
- animal stall, animal shed: barn ventilation
- clean room ventilation, semiconductor production machine
- compressor, side channel blower, vacuum pump, pressure pump, pump
- surface preparation: shot blasting/ sand blasting recovery e.g. at blasting chamber, ship yard, stripping machine, flooring preparation machine, grinding machine
- municipal vehicle: sweeper, sweeping machine
- municipal vehicle: lawn mower, slope mower, leaf blower/ leaf collector

- municipal vehicle: lawn mower, slope mower, leaf blower/ leaf collector
- scrubber, floor cleaning machine
- heating hose: exterior hose as protection hose

Properties

- medium-heavy duty
- highly abrasion resistant
- microbe resistant
- good resistance to oil, gasoline and chemicals
- very good low temperature flexibility
- flame-retardant according to: UL94-V2 & DIN 4102-B1
- permanently antistatic wall: according to ISO 8031 electrical and surface resistance $<10^9 \Omega$ (according to TRGS 727 $<2,5 \cdot 10^8 \Omega \cdot m$ and NFPA 652 $10^8-10^9 \Omega$)
- in accordance with ATEX 2014/34/EU (1999/92/EC) and German TRGS 727: pneumatic transport of flammable dusts and bulk materials (Zone 20, 21, 22 inside), aspiration of combustible dusts (Zone 22 inside),
- in accordance with ATEX 2014/34/EU (1999/92/EC) and German TRGS 727: for conveying for flammable liquids (inside zone 0, 1, 2), for conveying for non-flammable liquids, for use in zone 1 and 2 (gases), for use in zone 0 (gases)
- conforms to the safety regulations of the German Wood Trade Association
- according to DIN 26057 Type 2

- REACH according to --> Technology / Technical Information / REACH

Temperature Range

- 40 °C to 90 °C
- short time to 125 °C

Design

- AIRDUC® profile hose
- spring steel wire firmly embedded in wall
- wall: permanently antistatic premium ester-polyurethane (Pre-PUR®)
- wall thickness 0,7 mm approx.

Delivery variants

- further diameters and lengths available on request
- transparent (standard)
- special colours: full coloured
- customer-specific branding

| I.D. (in / mm) | outer Ø (mm) | Pressure DIN 26057 (50% Elongation) (bar) | Vacuum DIN 26057 (axially fixed) (bar) | Bending Radius (mm) | Weight (kg/m) | Dimensions in Stock (m) | Order No. |
|-------------------|-----------------|--|---|---------------------------|------------------|-------------------------------|---------------|
| 1 / 25 | 32.00 | 2,445 (5,45) | 0,755 (1,00) | 23.00 | 0.19 | 5 10 15 | 350-0025-1002 |
| - / 30 | 37.00 | 2,055 (4,57) | 0,630 (1,00) | 26.00 | 0.25 | 5 10 15 | 350-0030-1002 |
| 1,25 / 32 | 39.00 | 1,930 (4,29) | 0,590 (1,00) | 27.00 | 0.27 | 5 10 15 | 350-0032-1002 |
| 1,5 / 38 | 45.00 | 1,635 (3,64) | 0,495 (1,00) | 31.00 | 0.31 | 5 10 15 | 350-0038-1002 |
| - / 40 | 47.00 | 1,555 (3,46) | 0,470 (1,00) | 32.00 | 0.33 | 5 10 15 | 350-0040-1002 |
| 1,75 / 44-45 | 52.00 | 1,390 (3,08) | 0,420 (1,00) | 35.00 | 0.37 | 5 10 15 | 350-0045-1002 |
| 2 / 50-51 | 57.00 | 1,250 (2,78) | 0,380 (1,00) | 38.00 | 0.40 | 5 10 15 | 350-0050-1002 |
| - / 55 | 62.00 | 1,140 (2,53) | 0,345 (0,99) | 41.00 | 0.44 | 5 10 15 | 350-0055-1002 |
| 2,36 / 60 | 67.00 | 1,050 (2,33) | 0,315 (0,83) | 44.00 | 0.48 | 5 10 15 | 350-0060-1002 |
| 2,5 / 63-65 | 70.00 | 0,970 (2,15) | 0,290 (0,71) | 47.00 | 0.52 | 5 10 15 | 350-0065-1002 |
| - / 70 | 77.00 | 0,900 (2,00) | 0,185 (0,83) | 50.00 | 0.56 | 5 10 15 | 350-0070-1002 |



| I.D. | outer Ø | Pressure DIN 26057 (50% Elongation) | Vacuum DIN 26057 (axially fixed) | Bending Radius | Weight | Dimensions in Stock | Order No. |
|---------------|---------|---|--|-------------------|--------|------------------------|---------------|
| (in / mm) | (mm) | (bar) | (bar) | (mm) | (kg/m) | (m) | |
| 3 / 75-76 | 82.00 | 0,840 (1,87) | 0,175 (0,72) | 53.00 | 0.59 | 5 10 15 | 350-0075-1002 |
| - / 80 | 87.00 | 0,790 (1,75) | 0,160 (0,64) | 56.00 | 0.64 | 5 10 15 | 350-0080-1002 |
| 3,5 / 89-90 | 97.00 | 0,705 (1,56) | 0,145 (0,51) | 62.00 | 0.72 | 5 10 15 | 350-0090-1002 |
| 4 / 100-102 | 107.00 | 0,635 (1,41) | 0,135 (0,66) | 68.00 | 0.80 | 5 10 15 | 350-0100-1002 |
| - / 110 | 117.00 | 0,575 (1,28) | 0,125 (0,55) | 74.00 | 0.87 | 5 10 15 | 350-0110-1002 |
| 4,5 / 114-115 | 122.00 | 0,550 (1,22) | 0,120 (0,50) | 77.00 | 0.90 | 5 10 15 | 350-0115-1002 |
| 4,72 / 120 | 127.00 | 0,530 (1,17) | 0,115 (0,46) | 80.00 | 0.95 | 5 10 15 | 350-0120-1002 |
| 5 / 125-127 | 132.00 | 0,510 (1,13) | 0,110 (0,42) | 83.00 | 0.98 | 5 10 15 | 350-0125-1002 |
| - / 130 | 137.00 | 0,490 (1,08) | 0,105 (0,39) | 86.00 | 1.01 | 5 10 15 | 350-0130-1002 |
| 5,5 / 140 | 147.00 | 0,455 (1,01) | 0,095 (0,33) | 92.00 | 1.09 | 5 10 15 | 350-0140-1002 |
| 6 / 150-152 | 157.00 | 0,425 (0,94) | 0,075 (0,36) | 98.00 | 1.40 | 5 10 15 | 350-0150-1002 |
| 6,3 / 160 | 167.00 | 0,400 (0,88) | 0,070 (0,31) | 104.00 | 1.50 | 5 10 15 | 350-0160-1002 |
| - / 170 | 177.00 | 0,375 (0,83) | 0,065 (0,28) | 108.00 | 1.58 | 5 10 15 | 350-0170-1002 |
| - / 175 | 182.00 | 0,365 (0,81) | 0,065 (0,26) | 113.00 | 1.63 | 5 10 15 | 350-0175-1002 |
| 7 / 178-180 | 187.00 | 0,355 (0,78) | 0,060 (0,24) | 116.00 | 1.67 | 5 10 15 | 350-0180-1002 |
| 8 / 200-203 | 207.00 | 0,320 (0,71) | 0,055 (0,19) | 128.00 | 1.86 | 5 10 | 350-0200-1002 |
| - / 225 | 232.00 | 0,285 (0,63) | 0,050 (0,15) | 143.00 | 2.08 | 5 10 | 350-0225-1002 |
| - / 250 | 257.00 | 0,255 (0,57) | 0,045 (0,12) | 158.00 | 2.31 | 5 10 | 350-0250-1002 |
| 10 / 254 | 261.00 | 0,250 (0,56) | 0,045 (0,11) | 160.00 | 2.35 | 5 10 | 350-0254-1002 |
| - / 275 | 282.00 | 0,230 (0,51) | 0,040 (0,09) | 173.00 | 2.54 | 5 10 | 350-0275-1002 |
| 11 / 280 | 287.00 | 0,230 (0,51) | 0,040 (0,09) | 176.00 | 2.59 | 5 10 | 350-0280-1002 |
| - / 300 | 307.00 | 0,215 (0,47) | 0,035 (0,08) | 188.00 | 2.77 | 5 10 | 350-0300-1002 |
| 12 / 305 | 312.00 | 0,210 (0,46) | 0,035 (0,07) | 191.00 | 2.81 | 5 10 | 350-0305-1002 |
| - / 315 | 322.00 | 0,205 (0,45) | 0,035 (0,07) | 197.00 | 2.90 | 5 10 | 350-0315-1002 |
| - / 350 | 357.00 | 0,185 (0,40) | 0,030 (0,05) | 218.00 | 3.22 | 5 10 | 350-0350-1002 |
| 14 / 356 | 363.00 | 0,180 (0,40) | 0,030 (0,06) | 222.00 | 3.34 | 5 10 | 350-0356-1002 |
| - / 400 | 407.00 | 0,160 (0,35) | 0,030 (0,05) | 248.00 | 4.17 | 5 10 | 350-0400-1002 |
| - / 450 | 457.00 | 0,140 (0,32) | 0,025 (0,04) | 281.00 | 4.69 | 5 10 | 350-0450-1002 |
| - / 500 | 507.00 | 0,130 (0,28) | 0,025 (0,03) | 313.00 | 5.20 | 5 10 | 350-0500-1002 |

Accessories



CONNECT THREAD FITTING 234



CONNECT 246 AS



CONNECT ASEPTIC FITTING 249



CONNECT 240 + 241 AS



CLAMP 210 BRIDGE CLAMP



CONNECT DAIRY FITTING 247



CONNECT 243



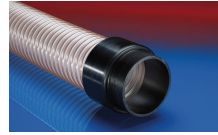
CONNECT 245



CONNECT MOULD ASSEMBLY 233



CONNECT 240 EC



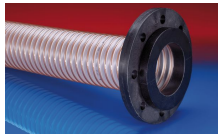
CONNECT 242



CONNECT 228



CLAMP 217



CONNECT 244



CLAMP 213



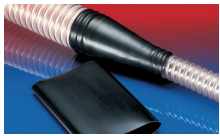
CLAMP 212



CONNECT 270-271



CONNECT TRI-CLAMP FITTING 245



CONNECT 223