

Antistatic polyurethane hose, medium-heavy, black

Application

- flexible hose/ ducting for abrasive powder, bulk material, granulate and for gases
- air supply: UV dryer, IR dryer
- extraction unit, dedusting system, filter system, oil mist extraction
- explosion hazard area
- textile industry, fiber extraction: spinning machine, knitting machine, weaving loom machine
- clean room ventilation, semiconductor production machine
- surface preparation: shot blasting/ sand blasting recovery e.g. at blasting chamber, ship yard, stripping machine, flooring preparation machine, grinding machine
- heating hose: exterior hose as protection hose

Properties

- medium-heavy duty

- highly abrasion resistant
- good resistance to oil, gasoline and chemicals
- very good low temperature flexibility
- permanently antistatic wall: according to ISO 8031 electrical and surface resistance $<10^9 \Omega$ (according to TRGS 727 $<2,5 \cdot 10^9 \Omega \cdot m$ and NFPA 652 $10^8-10^9 \Omega$)
- in accordance with ATEX 2014/34/EU (1999/92/EC) and German TRGS 727: pneumatic transport of flammable dusts and bulk materials (Zone 20, 21, 22 inside), aspiration of combustible dusts (Zone 22 inside),
- in accordance with ATEX 2014/34/EU (1999/92/EC) and German TRGS 727: for conveying for flammable liquids (inside zone 0, 1, 2), for conveying for non-flammable liquids, for use in zone 1 and 2 (gases), for use in zone 0 (gases)
- according to DIN 26057 Type 2
- conforms to RoHS guideline
- REACH according to --> Technology / Technical Information / REACH

Temperature Range

- 40°C to 90°C

- short time to 125°C

Design

- AIRDUC® profile hose
- spring steel wire firmly embedded in wall
- wall: permanently antistatic premium ester-polyurethane (Pre-PUR®)
- wall thickness 0,7 mm approx.

Delivery variants

- further diameters and lengths available on request
- black (standard)
- special colours: full coloured
- customer-specific branding

I.D. (in / mm)	outer Ø (mm)	Pressure DIN 26057 (50% Elongation) (bar)	Vacuum DIN 26057 (axially fixed) (bar)	Bending Radius (mm)	Weight (kg/m)	Dimensions in Stock (m)	Order No.
- / 40	47.00	1,555 (3,46)	0,470 (1,00)	32.00	0.33	10	350-0040-3030
2 / 50-51	57.00	1,250 (2,78)	0,380 (1,00)	38.00	0.40	10	350-0050-3030
2,36 / 60	67.00	1,050 (2,33)	0,315 (0,83)	44.00	0.48	10	350-0060-3030
- / 70	77.00	0,900 (2,00)	0,185 (0,83)	50.00	0.56	10	350-0070-3030
3 / 75-76	82.00	0,840 (1,87)	0,175 (0,72)	53.00	0.59	10	350-0075-3030
- / 80	87.00	0,790 (1,75)	0,160 (0,64)	56.00	0.64	10	350-0080-3030
4 / 100-102	107.00	0,635 (1,41)	0,135 (0,66)	68.00	0.80	10	350-0100-3030
4,72 / 120	127.00	0,530 (1,17)	0,115 (0,46)	80.00	0.95	10	350-0120-3030
5 / 125-127	132.00	0,510 (1,13)	0,110 (0,42)	83.00	0.98	10	350-0125-3030
5,5 / 140	147.00	0,455 (1,01)	0,095 (0,33)	92.00	1.09	10	350-0140-3030
6 / 150-152	157.00	0,425 (0,94)	0,075 (0,36)	98.00	1.40	10	350-0150-3030
6,3 / 160	167.00	0,400 (0,88)	0,070 (0,31)	104.00	1.50	10	350-0160-3030
8 / 200-203	207.00	0,320 (0,71)	0,055 (0,19)	128.00	1.86	10	350-0200-3030
- / 250	257.00	0,255 (0,57)	0,045 (0,12)	158.00	2.31	10	350-0250-3030
- / 300	307.00	0,215 (0,47)	0,035 (0,08)	188.00	2.77	10	350-0300-3030

Accessories



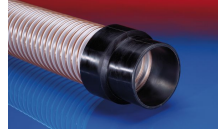
CLAMP 217



CONNECT THREAD FITTING 234



CONNECT DAIRY FITTING 247



CONNECT 240 + 241 AS



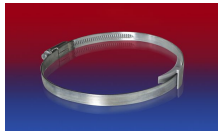
CONNECT 245



CONNECT 228



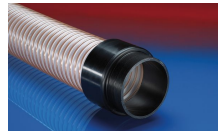
CONNECT 270-271



CLAMP 210 BRIDGE CLAMP



CLAMP 213



CONNECT 242



CONNECT 246 AS



CONNECT 240 EC



CLAMP 212



CONNECT 243



CONNECT MOULD ASSEMBLY 233



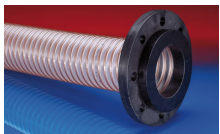
CONNECT TRI-CLAMP FITTING 245



CONNECT 223



CONNECT ASEPTIC FITTING 249



CONNECT 244