

Antistatic polyurethane hose, medium-heavy, microbe resistant

Application

- flexible hose/ ducting for abrasive powder, bulk material, granulate and for gases
- printed circuit board drilling machine (PCB)
- offset printing machine: air supply, air supply cabinet
- air supply: UV dryer, IR dryer
- extraction unit, dedusting system, filter system, oil mist extraction
- chemical industry: chemical vapours, vapour return hose at loading arm, paint steam, spray mist extraction
- explosion hazard area
- textile industry, fiber extraction: spinning machine, knitting machine, weaving loom machine
- animal stall, animal shed: barn ventilation
- clean room ventilation, semiconductor production machine
- compressor, side channel blower, vacuum pump, pressure pump, pump
- surface preparation: shot blasting/ sand blasting recovery e.g. at blasting chamber, ship yard, stripping machine, flooring preparation machine, grinding machine

- municipal vehicle: sweeper, sweeping machine
- municipal vehicle: lawn mower, slope mower, leaf blower/ leaf collector
- scrubber, floor cleaning machine
- heating hose: exterior hose as protection hose

Properties

- medium-heavy duty
- highly abrasion resistant
- microbe resistant
- good resistance to oil, gasoline and chemicals
- very good low temperature flexibility
- permanently antistatic wall: according to ISO 8031 electrical and surface resistance $<10^9 \Omega$ (according to TRGS 727 $<2,5 \cdot 10^9 \Omega \cdot m$ and NFPA 652 $10^8 - 10^9 \Omega$)
- in accordance with ATEX 2014/34/EU (1999/92/EC) and German TRGS 727: pneumatic transport of flammable dusts and bulk materials (Zone 20, 21, 22 inside), aspiration of combustible dusts (Zone 22 inside),
- in accordance with ATEX 2014/34/EU (1999/92/EC) and German TRGS 727: for conveying for flammable liquids (inside zone 0, 1, 2), for conveying for non-flammable liquids, for use in zone 1 and 2 (gases), for use in zone 0 (gases)

- according to DIN 26057 Type 2
- conforms to RoHS guideline
- REACH according to --> Technology / Technical Information / REACH

Temperature Range

- 40°C to 90°C
- short time to 125°C

Design

- AIRDUC® profile hose
- wall: permanently antistatic premium ester-polyurethane (Pre-PUR®)
- spring steel wire firmly embedded in wall
- wall thickness 0,7 mm approx.

Delivery variants

- further diameters and lengths available on request

I.D. (in / mm)	outer Ø (mm)	Pressure DIN 26057 (50% Elongation) (bar)	Vacuum DIN 26057 (axially fixed) (bar)	Bending Radius (mm)	Weight (kg/m)	Minimum Quantity (m)	Order No.
black + blue							
1,25 / 32	39.00	1,930 (4,29)	0,590 (1,00)	27.00	0.27	150	350-0032-0996
1,5 / 38	45.00	1,635 (3,64)	0,495 (1,00)	31.00	0.31	150	350-0038-0996
- / 40	47.00	1,555 (3,46)	0,470 (1,00)	32.00	0.33	150	350-0040-0996
2 / 50-51	57.00	1,250 (2,78)	0,380 (1,00)	38.00	0.40	150	350-0050-0996
2,36 / 60	67.00	1,050 (2,33)	0,315 (0,83)	44.00	0.48	150	350-0060-0996
2,5 / 63-65	70.00	0,970 (2,15)	0,290 (0,71)	47.00	0.52	150	350-0065-0996
- / 70	77.00	0,900 (2,00)	0,185 (0,83)	50.00	0.56	150	350-0070-0996
3 / 75-76	82.00	0,840 (1,87)	0,175 (0,72)	53.00	0.59	100	350-0075-0996
- / 80	87.00	0,790 (1,75)	0,160 (0,64)	56.00	0.64	100	350-0080-0996
- / 85	92.00	0,750 (1,65)	0,155 (0,65)	59.00	0.68	100	350-0085-0996
4 / 100-102	107.00	0,635 (1,41)	0,135 (0,66)	68.00	0.80	100	350-0100-0996
5 / 125-127	132.00	0,510 (1,13)	0,110 (0,42)	83.00	0.98	100	350-0125-0996



I.D.	outer Ø	Pressure DIN 26057 (50% Elongation)	Vacuum DIN 26057 (axially fixed)	Bending Radius	Weight	Minimum Quantity	Order No.
(in / mm)	(mm)	(bar)	(bar)	(mm)	(kg/m)	(m)	
5,5 / 140	147.00	0,455 (1,01)	0,095 (0,33)	92.00	1.09	80	350-0140-0996
6 / 150-152	157.00	0,425 (0,94)	0,075 (0,36)	98.00	1.40	80	350-0150-0996
6,3 / 160	167.00	0,400 (0,88)	0,070 (0,31)	104.00	1.50	80	350-0160-0996
8 / 200-203	207.00	0,320 (0,71)	0,055 (0,19)	128.00	1.86	60	350-0200-0996

black + green

1,25 / 32	39.00	1,930 (4,29)	0,590 (1,00)	27.00	0.27	150	350-0032-0997
1,5 / 38	45.00	1,635 (3,64)	0,495 (1,00)	31.00	0.31	150	350-0038-0997
- / 40	47.00	1,555 (3,46)	0,470 (1,00)	32.00	0.33	150	350-0040-0997
2 / 50-51	57.00	1,250 (2,78)	0,380 (1,00)	38.00	0.40	150	350-0050-0997
2,36 / 60	67.00	1,050 (2,33)	0,315 (0,83)	44.00	0.48	150	350-0060-0997
2,5 / 63-65	70.00	0,970 (2,15)	0,290 (0,71)	47.00	0.52	150	350-0065-0997
- / 70	77.00	0,900 (2,00)	0,185 (0,83)	50.00	0.56	150	350-0070-0997
3 / 75-76	82.00	0,840 (1,87)	0,175 (0,72)	53.00	0.59	100	350-0075-0997
- / 80	87.00	0,790 (1,75)	0,160 (0,64)	56.00	0.64	100	350-0080-0997
- / 85	92.00	0,750 (1,65)	0,155 (0,65)	59.00	0.68	100	350-0085-0997
4 / 100-102	107.00	0,635 (1,41)	0,135 (0,66)	68.00	0.80	100	350-0100-0997
5 / 125-127	132.00	0,510 (1,13)	0,110 (0,42)	83.00	0.98	100	350-0125-0997
5,5 / 140	147.00	0,455 (1,01)	0,095 (0,33)	92.00	1.09	80	350-0140-0997
6 / 150-152	157.00	0,425 (0,94)	0,075 (0,36)	98.00	1.40	80	350-0150-0997
6,3 / 160	167.00	0,400 (0,88)	0,070 (0,31)	104.00	1.50	80	350-0160-0997
8 / 200-203	207.00	0,320 (0,71)	0,055 (0,19)	128.00	1.86	60	350-0200-0997

black + yellow

1,25 / 32	39.00	1,930 (4,29)	0,590 (1,00)	27.00	0.27	150	350-0032-0998
1,5 / 38	45.00	1,635 (3,64)	0,495 (1,00)	31.00	0.31	150	350-0038-0998
- / 40	47.00	1,555 (3,46)	0,470 (1,00)	32.00	0.33	150	350-0040-0998
2 / 50-51	57.00	1,250 (2,78)	0,380 (1,00)	38.00	0.40	150	350-0050-0998
2,36 / 60	67.00	1,050 (2,33)	0,315 (0,83)	44.00	0.48	150	350-0060-0998
2,5 / 63-65	70.00	0,970 (2,15)	0,290 (0,71)	47.00	0.52	150	350-0065-0998
- / 70	77.00	0,900 (2,00)	0,185 (0,83)	50.00	0.56	150	350-0070-0998
3 / 75-76	82.00	0,840 (1,87)	0,175 (0,72)	53.00	0.59	100	350-0075-0998
- / 80	87.00	0,790 (1,75)	0,160 (0,64)	56.00	0.64	100	350-0080-0998
- / 85	92.00	0,750 (1,65)	0,155 (0,65)	59.00	0.68	100	350-0085-0998
4 / 100-102	107.00	0,635 (1,41)	0,135 (0,66)	68.00	0.80	100	350-0100-0998
5 / 125-127	132.00	0,510 (1,13)	0,110 (0,42)	83.00	0.98	100	350-0125-0998
5,5 / 140	147.00	0,455 (1,01)	0,095 (0,33)	92.00	1.09	80	350-0140-0998
6 / 150-152	157.00	0,425 (0,94)	0,075 (0,36)	98.00	1.40	80	350-0150-0998
6,3 / 160	167.00	0,400 (0,88)	0,070 (0,31)	104.00	1.50	80	350-0160-0998
8 / 200-203	207.00	0,320 (0,71)	0,055 (0,19)	128.00	1.86	60	350-0200-0998

black + red

1,25 / 32	39.00	1,930 (4,29)	0,590 (1,00)	27.00	0.27	150	350-0032-0999
1,5 / 38	45.00	1,635 (3,64)	0,495 (1,00)	31.00	0.31	150	350-0038-0999
- / 40	47.00	1,555 (3,46)	0,470 (1,00)	32.00	0.33	150	350-0040-0999
2 / 50-51	57.00	1,250 (2,78)	0,380 (1,00)	38.00	0.40	150	350-0050-0999
2,36 / 60	67.00	1,050 (2,33)	0,315 (0,83)	44.00	0.48	150	350-0060-0999
2,5 / 63-65	70.00	0,970 (2,15)	0,290 (0,71)	47.00	0.52	150	350-0065-0999
- / 70	77.00	0,900 (2,00)	0,185 (0,83)	50.00	0.56	150	350-0070-0999
3 / 75-76	82.00	0,840 (1,87)	0,175 (0,72)	53.00	0.59	100	350-0075-0999
- / 80	87.00	0,790 (1,75)	0,160 (0,64)	56.00	0.64	100	350-0080-0999
- / 85	92.00	0,750 (1,65)	0,155 (0,65)	59.00	0.68	100	350-0085-0999
4 / 100-102	107.00	0,635 (1,41)	0,135 (0,66)	68.00	0.80	100	350-0100-0999

I.D. (in / mm)	outer Ø (mm)	Pressure DIN 26057 (50% Elongation) (bar)	Vacuum DIN 26057 (axially fixed) (bar)	Bending Radius (mm)	Weight (kg/m)	Minimum Quantity (m)	Order No.
5 / 125-127	132.00	0,510 (1,13)	0,110 (0,42)	83.00	0.98	100	350-0125-0999
5,5 / 140	147.00	0,455 (1,01)	0,095 (0,33)	92.00	1.09	80	350-0140-0999
6 / 150-152	157.00	0,425 (0,94)	0,075 (0,36)	98.00	1.40	80	350-0150-0999
6,3 / 160	167.00	0,400 (0,88)	0,070 (0,31)	104.00	1.50	80	350-0160-0999
8 / 200-203	207.00	0,320 (0,71)	0,055 (0,19)	128.00	1.86	60	350-0200-0999

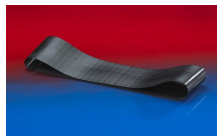
Accessories



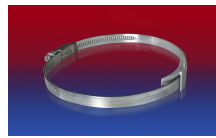
CLAMP 213



CONNECT 240 EC



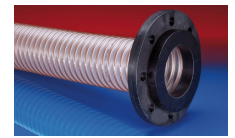
CONNECT 228



CLAMP 210 BRIDGE
CLAMP



CONNECT 270-271



CONNECT 244



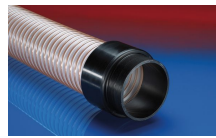
CLAMP 217



CONNECT 240 + 241
AS



CONNECT 223



CONNECT 242



CONNECT MOULD
ASSEMBLY 233



CONNECT 245



CONNECT ASEPTIC
FITTING 249



CONNECT DAIRY
FITTING 247



CONNECT TRI-
CLAMP FITTING 245



CLAMP 212



CONNECT 246 AS



CONNECT 243



CONNECT THREAD
FITTING 234