

Electrically conductive polyurethane hose, heavy

Application

- flexible hose/ ducting for high throughput of abrasive powder, bulk material, granulate and for gases
- industrial vacuum cleaners, vacuum cleaners
- explosion hazard area
- Coal mine, mine, tunnelling: ventilation, methane extraction
- raw material conveying hose for powders, granulates, sand, quartz, gravel, shards and chips/ shavings

Properties

- heavy duty
- increased pressure and vacuum resistance
- highly abrasion resistant

- highly abrasion resistant
- very good low temperature flexibility
- good resistance to oil, gasoline and chemicals
- electrically conductive wall: electrical and surface resistance $<10^3\Omega$ (according to NFPA 652 $<10^6\Omega$)
- in accordance with ATEX 2014/34/EU (1999/92/EC) and German TRGS 727: pneumatic transport of flammable dusts and bulk materials (Zone 20, 21, 22 inside), aspiration of combustible dusts (Zone 22 inside),
- in accordance with ATEX 2014/34/EU (1999/92/EC) and German TRGS 727: for conveying for flammable liquids (inside zone 0, 1, 2), for conveying for non-flammable liquids, for use in zone 1 and 2 (gases), for use in zone 0 (gases)
- according to DIN 26057 Type 3
- conforms to RoHS guideline
- REACH according to --> Technology / Technical Information / REACH

Temperature Range

Design

- AIRDUC® profile hose
- spring steel wire firmly embedded in wall
- wall: electrically conductive premium ester-polyurethane (Pre-PUR®)
- wall thickness 1,4 - 1,5 mm approx.

Delivery variants

- further diameters and lengths available on request
- black (standard)
- customer-specific branding

I.D. (in / mm)	outer Ø (mm)	Pressure DIN 26057 (50% Elongation) (bar)	Vacuum DIN 26057 (axially fixed) (bar)	Bending Radius (mm)	Weight (kg/m)	Dimensions in Stock (m)	Order No.
1 / 25	32.00	2,930 (4,74)	0,950 (1,00)	20.00	0.28	10 15	355-0025-1003
- / 30	40.00	2,470 (3,99)	0,650 (1,00)	25.00	0.47	10 15	355-0030-1003
1,25 / 32	42.00	2,325 (3,75)	0,610 (1,00)	26.00	0.47	10 15	355-0032-1003
1,5 / 38	48.00	1,975 (3,19)	0,515 (1,00)	29.00	0.55	10 15	355-0038-1003
- / 40	50.00	1,880 (3,03)	0,490 (1,00)	30.00	0.57	10 15	355-0040-1003
2 / 50-51	60.00	1,515 (2,45)	0,390 (1,00)	35.00	0.71	10 15 20	355-0050-1003
- / 55	65.00	1,385 (2,23)	0,355 (1,00)	38.00	0.77	10 15	355-0055-1003
2,36 / 60	70.00	1,270 (2,05)	0,325 (1,00)	40.00	0.83	10 15 20	355-0060-1003
2,5 / 63-65	75.00	1,175 (1,90)	0,300 (1,00)	43.00	0.89	10 15	355-0065-1003
- / 70	81.00	1,515 (2,45)	0,250 (1,00)	62.00	1.01	10 15	355-0070-1003
3 / 75-76	86.00	1,420 (2,29)	0,235 (1,00)	66.00	1.07	10 15	355-0075-1003
- / 80	91.00	1,335 (2,15)	0,220 (1,00)	69.00	1.14	10 15	355-0080-1003
3,5 / 89-90	101.00	1,190 (1,92)	0,195 (1,00)	76.00	1.27	10 15	355-0090-1003
4 / 100	111.00	1,075 (1,73)	0,175 (0,94)	83.00	1.41	10 15	355-0100-1003
- / 110	121.00	0,980 (1,58)	0,160 (0,77)	90.00	1.54	10 15	355-0110-1003
4,5 / 114-115	126.00	0,935 (1,51)	0,155 (0,70)	94.00	1.61	10 15	355-0115-1003
5 / 125-127	136.00	0,865 (1,39)	0,140 (0,59)	101.00	1.74	10 15	355-0125-1003
6 / 150-152	161.00	0,720 (1,16)	0,130 (0,55)	118.00	2.29	10 15	355-0150-1003

I.D. (in / mm)	outer Ø (mm)	Pressure DIN 26057 (50% Elongation) (bar)	Vacuum DIN 26057 (axially fixed) (bar)	Bending Radius (mm)	Weight (kg/m)	Dimensions in Stock (m)	Order No.
8 / 200	212.00	0,505 (0,81)	0,085 (0,38)	155.00	2.85	10	355-0200-1003
- / 300	313.00	0,340 (0,54)	0,075 (0,27)	226.00	4.32	10	355-0300-1003
- / 315	328.00	0,320 (0,52)	0,070 (0,25)	237.00	4.64	10	355-0315-1003

Accessories



CONNECT 240 + 241
AS



CONNECT 223



CONNECT 246 AS



CONNECT PRESS
ASSEMBLY 232



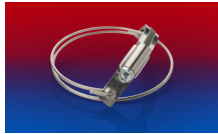
CLAMP 217



CONNECT 228



CLAMP 213



CLAMP 216



CLAMP 212 EC



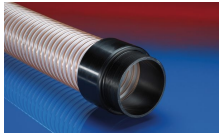
CONNECT MOULD
ASSEMBLY 233



CONNECT 245



CONNECT 243



CONNECT 242



CONNECT SAFETY
CLAMP ASSEMBLY
231



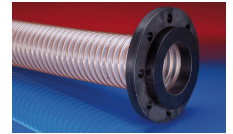
CONNECT 270-271



CONNECT THREAD
FITTING 234



CLAMP 212



CONNECT 244



CONNECT 240 EC