

Electrically conductive polyurethane hose, heavy

Application

- flexible hose/ ducting for high throughput of abrasive powder, bulk material, granulate and for gases
- industrial vacuum cleaners, vacuum cleaners
- explosion hazard area
- Coal mine, mine, tunnelling: ventilation, methane extraction
- raw material conveying hose for powders, granulates, sand, quartz, gravel, shards and chips/ shavings

Properties

- heavy duty
- highly abrasion resistant
- increased pressure and vacuum resistance

- increased pressure and vacuum resistance
- good resistance to oil, gasoline and chemicals
- very good low temperature flexibility
- electrically conductive wall: electrical and surface resistance $<10^3\Omega$ (according to NFPA 652 $<10^6\Omega$)
- in accordance with ATEX 2014/34/EU (1999/92/EC) and German TRGS 727: pneumatic transport of flammable dusts and bulk materials (Zone 20, 21, 22 inside), aspiration of combustible dusts (Zone 22 inside),
- in accordance with ATEX 2014/34/EU (1999/92/EC) and German TRGS 727: for conveying for flammable liquids (inside zone 0, 1, 2), for conveying for non-flammable liquids, for use in zone 1 and 2 (gases), for use in zone 0 (gases)
- according to DIN 26057 Type 3
- conforms to RoHS guideline
- REACH according to --> Technology / Technical Information / REACH

Temperature Range

Design

- AIRDUC® profile hose
- spring steel wire firmly embedded in wall
- wall: electrically conductive premium ester-polyurethane (Pre-PUR®)
- wall thickness 1,4 - 1,5 mm approx.

Delivery variants

- further diameters and lengths available on request
- black (standard)
- customer-specific branding

I.D. (in / mm)	outer Ø (mm)	Pressure DIN 26057 (50% Elongation) (bar)	Vacuum DIN 26057 (axially fixed) (bar)	Bending Radius (mm)	Weight (kg/m)	Minimum Quantity (m)	Order No.
black + blue							
1,25 / 32	42.00	2,325 (3,75)	0,610 (1,00)	26.00	0.47	150	355-0032-3996
1,5 / 38	48.00	1,975 (3,19)	0,515 (1,00)	26.00	0.55	150	355-0038-3996
- / 40	50.00	1,880 (3,03)	0,490 (1,00)	30.00	0.57	150	355-0040-3996
2 / 50-51	60.00	1,515 (2,45)	0,390 (1,00)	35.00	0.71	150	355-0050-3996
2,36 / 60	70.00	1,270 (2,05)	0,325 (1,00)	43.00	0.83	150	355-0060-3996
2,5 / 63-65	75.00	1,270 (2,05)	0,300 (1,00)	43.00	0.89	150	355-0065-3996
- / 70	81.00	1,515 (2,45)	0,250 (1,00)	62.00	1.01	150	355-0070-3996
3 / 75-76	86.00	1,420 (2,29)	0,235 (1,00)	66.00	1.07	100	355-0075-3996
- / 80	91.00	1,335 (2,15)	0,220 (1,00)	69.00	1.14	100	355-0080-3996
4 / 100-102	111.00	1,075 (1,73)	0,175 (0,94)	83.00	1.41	100	355-0100-3996
5 / 125-127	136.00	0,865 (1,39)	0,140 (0,59)	101.00	1.74	100	355-0125-3996
6 / 150-152	161.00	0,720 (1,16)	0,130 (0,55)	118.00	2.29	80	355-0150-3996
8 / 200-203	212.00	0,505 (0,81)	0,085 (0,38)	155.00	2.85	60	355-0200-3996
black + green							
1,25 / 32	42.00	2,325 (3,75)	0,610 (1,00)	26.00	0.47	150	355-0032-3997



I.D. (in / mm)	outer Ø (mm)	Pressure DIN 26057 (50% Elongation) (bar)	Vacuum DIN 26057 (axially fixed) (bar)	Bending Radius (mm)	Weight (kg/m)	Minimum Quantity (m)	Order No.
1,5 / 38	48.00	1,975 (3,19)	0,515 (1,00)	29.00	0.47	150	355-0038-3997
- / 40	50.00	1,880 (3,03)	0,490 (1,00)	30.00	0.57	150	355-0040-3997
2 / 50-51	60.00	1,515 (2,45)	0,390 (1,00)	35.00	0.71	150	355-0050-3997
2,36 / 60	70.00	1,270 (2,05)	0,325 (1,00)	40.00	0.83	150	355-0060-3997
2,5 / 63-65	75.00	1,175 (1,90)	0,300 (1,00)	43.00	0.89	150	355-0065-3997
- / 70	81.00	1,515 (2,45)	0,250 (1,00)	62.00	1.01	150	355-0070-3997
3 / 75-76	86.00	1,335 (2,15)	0,220 (1,00)	69.00	1.07	100	355-0075-3997
- / 80	91.00	1,335 (2,15)	0,220 (1,00)	69.00	1.14	100	355-0080-3997
4 / 100-102	111.00	1,075 (1,73)	0,175 (0,94)	83.00	1.41	100	355-0100-3997
5 / 125-127	136.00	0,865 (1,39)	0,140 (0,59)	101.00	1.74	100	355-0125-3997
6 / 150-152	161.00	0,720 (1,16)	0,130 (0,55)	118.00	2.29	80	355-0150-3997
8 / 200-203	212.00	0,505 (0,81)	0,085 (0,38)	155.00	2.85	60	355-0200-3997

black + yellow

1,25 / 32	42.00	2,325 (3,75)	0,610 (1,00)	26.00	0.47	150	355-0032-3998
1,5 / 38	48.00	1,975 (3,19)	0,515 (1,00)	26.00	0.47	150	355-0038-3998
- / 40	50.00	1,880 (3,03)	0,490 (1,00)	30.00	0.57	150	355-0040-3998
2 / 50-51	60.00	1,515 (2,45)	0,390 (1,00)	35.00	0.71	150	355-0050-3998
2,36 / 60	70.00	1,270 (2,05)	0,325 (1,00)	40.00	0.83	150	355-0060-3998
2,5 / 63-65	75.00	1,175 (1,90)	0,300 (1,00)	43.00	0.89	150	355-0065-3998
- / 70	81.00	1,515 (2,45)	0,250 (1,00)	62.00	1.01	150	355-0070-3998
3 / 75-76	86.00	1,420 (2,29)	0,235 (1,00)	66.00	1.07	100	355-0075-3998
- / 80	91.00	1,335 (2,15)	0,220 (1,00)	69.00	1.14	100	355-0080-3998
4 / 100-102	111.00	1,075 (1,73)	0,175 (0,94)	83.00	1.41	100	355-0100-3998
5 / 125-127	136.00	0,865 (1,39)	0,140 (0,59)	101.00	1.74	100	355-0125-3998
6 / 150-152	161.00	0,720 (1,16)	0,130 (0,55)	118.00	2.29	80	355-0150-3998
8 / 200-203	212.00	0,505 (0,81)	0,085 (0,38)	155.00	2.85	60	355-0200-3998

black + red

1,25 / 32	42.00	2,325 (3,75)	0,610 (1,00)	26.00	0.47	150	355-0032-3999
1,5 / 38	48.00	1,975 (3,19)	0,515 (1,00)	29.00	0.55	150	355-0038-3999
- / 40	50.00	1,880 (3,03)	0,490 (1,00)	30.00	0.57	150	355-0040-3999
2 / 50-51	60.00	1,515 (2,45)	0,390 (1,00)	35.00	0.71	150	355-0050-3999
2,36 / 60	70.00	1,270 (2,05)	0,325 (1,00)	40.00	0.83	150	355-0060-3999
2,5 / 63-65	75.00	1,175 (1,90)	0,300 (1,00)	43.00	0.89	150	355-0065-3999
- / 70	81.00	1,515 (2,45)	0,250 (1,00)	62.00	1.01	150	355-0070-3999
3 / 75-76	86.00	1,420 (2,29)	0,235 (1,00)	66.00	1.07	100	355-0075-3999
- / 80	91.00	1,335 (2,15)	0,220 (1,00)	69.00	1.14	100	355-0080-3999
4 / 100-102	111.00	1,075 (1,73)	0,175 (0,94)	83.00	1.41	100	355-0100-3999
5 / 125-127	136.00	0,865 (1,39)	0,140 (0,59)	101.00	1.74	100	355-0125-3999
6 / 150-152	161.00	0,720 (1,16)	0,130 (0,55)	118.00	2.29	80	355-0150-3999
8 / 200-203	212.00	0,505 (0,81)	0,085 (0,38)	155.00	2.85	60	355-0200-3999

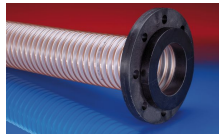
Accessories



CONNECT 243



CONNECT MOULD ASSEMBLY 233



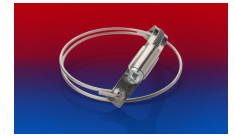
CONNECT 244



CONNECT PRESS ASSEMBLY 232



CONNECT 270-271



CLAMP 216



CONNECT 240 + 241 AS



CONNECT SAFETY CLAMP ASSEMBLY 231



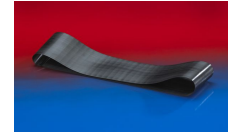
CONNECT 245



CLAMP 212 EC



CLAMP 212



CONNECT 228



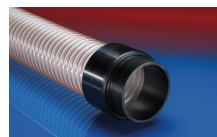
CONNECT 240 EC



CONNECT 246 AS



CONNECT THREAD FITTING 234



CONNECT 242



CLAMP 217



CONNECT 223



CLAMP 213