

## Antistatic food hose and pharmaceutical hose, medium-heavy

### Application

- flexible hose/ ducting for abrasive powder, bulk material, granulate and for gases
- food industry, pharmaceutical industry: foodstuff, pharmaceutical
- conveying of dry foods e.g. rice, cereals, sugar, milk powder, powders, coffee, tea, grains, flour, frozen foods
- mixer, dryer, packaging machine, bulk-bag (big bag)-charging and discharging, mill
- explosion hazard area
- clean room ventilation, semiconductor production machine
- paper mill, paper and pulp industry: waste water, air extraction
- medical equipment/ medical technology, healthcare sector: cable protection conduit, air supply hose, extraction hose
- municipal vehicle: lawn mower, slope mower, leaf blower/ leaf collector

### Properties

- medium-heavy duty
- highly abrasion resistant

- highly abrasion resistant
- Food grade wall, complies with: EU-Directive 10/2011 and EC 1935/2004, incl. the latest EU-Directive 2015/174, FDA 21 CFR 177.2600
- odourless and tasteless
- microbe and hydrolysis resistant
- good resistance to oil, gasoline and chemicals
- permanently antistatic wall: according to ISO 8031 electrical and surface resistance  $<10^9 \Omega$  (according to TRGS 727  $<2,5 \cdot 10^8 \Omega \cdot m$  and NFPA 652  $10^8-10^9 \Omega$ )
- very good low temperature flexibility
- in accordance with ATEX 2014/34/EU (1999/92/EC) and German TRGS 727: pneumatic transport of flammable dusts and bulk materials (Zone 20, 21, 22 inside), aspiration of combustible dusts (Zone 22 inside),
- in accordance with ATEX 2014/34/EU (1999/92/EC) and German TRGS 727: for conveying for flammable liquids (inside zone 0, 1, 2), for conveying for non-flammable liquids, for use in zone 1 and 2 (gases), for use in zone 0 (gases)
- according to DIN 26057 Type 2
- manufacturing process acc. GMP EC 2023/2006
- conforms to RoHS guideline
- REACH according to --> Technology / Technical Information / REACH

### Temperature Range

- 40 °C to 90 °C
- short time to 125 °C

### Design

- AIRDUC® profile hose
- spring steel wire firmly embedded in wall
- wall: permanently antistatic premium ether-polyurethane (Pre-PUR®)
- wall thickness 0,7 mm approx.

### Delivery variants

- further diameters and lengths available on request
- transparent (standard)
- customer-specific branding

I.D. (in / mm)	outer Ø (mm)	Pressure DIN 26057 (50% Elongation) (bar)	Vacuum DIN 26057 (axially fixed) (bar)	Bending Radius (mm)	Weight (kg/m)	Dimensions in Stock (m)	Order No.
<b>standard</b>							
1 / 25	32.00	2,445 (5,45)	0,755 (1,00)	23.00	0.19	5 10 15	350-0025-0000
- / 30	37.00	2,055 (4,57)	0,630 (1,00)	26.00	0.25	5 10 15	350-0030-0000
1,25 / 32	39.00	1,930 (4,29)	0,590 (1,00)	27.00	0.27	5 10 15	350-0032-0000
1,36 / 35	42.00	1,770 (3,94)	0,540 (1,00)	29.00	0.29	5 10 15	350-0035-0000
1,5 / 38	45.00	1,635 (3,64)	0,495 (1,00)	31.00	0.31	5 10 15	350-0038-0000
- / 40	47.00	1,555 (3,46)	0,470 (1,00)	32.00	0.33	5 10 15	350-0040-0000
1,75 / 44-45	52.00	1,390 (3,08)	0,420 (1,00)	35.00	0.37	5 10 15	350-0045-0000
2 / 50-51	57.00	1,250 (2,78)	0,380 (1,00)	38.00	0.40	5 10 15 20	350-0050-0000
- / 55	62.00	1,140 (2,53)	0,345 (0,99)	41.00	0.44	5 10 15	350-0055-0000
2,36 / 60	67.00	1,050 (2,33)	0,315 (0,83)	44.00	0.48	5 10 15	350-0060-0000
2,5 / 63-65	70.00	0,970 (2,15)	0,290 (0,71)	47.00	0.52	5 10 15	350-0065-0000



I.D.	outer Ø	Pressure DIN 26057 (50% Elongation)	Vacuum DIN 26057 (axially fixed)	Bending Radius	Weight	Dimensions in Stock	Order No.
(in / mm)	(mm)	(bar)	(bar)	(mm)	(kg/m)	(m)	
- / 70	77.00	0,900 (2,00)	0,185 (0,83)	50.00	0.56	5 10 15	350-0070-0000
3 / 75-76	82.00	0,840 (1,87)	0,175 (0,72)	53.00	0.59	5 10 15	350-0075-0000
- / 80	87.00	0,790 (1,75)	0,160 (0,64)	56.00	0.64	5 10 15	350-0080-0000
3,5 / 89-90	97.00	0,705 (1,56)	0,145 (0,51)	62.00	0.72	5 10 15	350-0090-0000
4 / 100-102	107.00	0,635 (1,41)	0,135 (0,66)	68.00	0.80	5 10 15	350-0100-0000
- / 110	117.00	0,575 (1,28)	0,125 (0,55)	74.00	0.87	5 10 15	350-0110-0000
4,5 / 114-115	122.00	0,550 (1,22)	0,120 (0,50)	77.00	0.90	5 10 15	350-0115-0000
4,72 / 120	127.00	0,530 (1,17)	0,115 (0,46)	80.00	0.95	5 10 15	350-0120-0000
5 / 125-127	132.00	0,510 (1,13)	0,110 (0,42)	83.00	0.98	5 10 15	350-0125-0000
- / 130	137.00	0,490 (1,08)	0,105 (0,39)	86.00	1.01	5 10 15	350-0130-0000
5,5 / 140	147.00	0,455 (1,01)	0,095 (0,33)	92.00	1.09	5 10 15	350-0140-0000
6 / 150-152	157.00	0,425 (0,94)	0,075 (0,36)	98.00	1.40	5 10 15	350-0150-0000
6,3 / 160	167.00	0,400 (0,88)	0,070 (0,31)	104.00	1.50	5 10 15	350-0160-0000
- / 170	177.00	0,375 (0,83)	0,065 (0,28)	108.00	1.58	5 10 15	350-0170-0000
- / 175	182.00	0,365 (0,81)	0,065 (0,26)	113.00	1.63	5 10 15	350-0175-0000
7 / 178-180	187.00	0,355 (0,78)	0,060 (0,24)	116.00	1.67	5 10 15	350-0180-0000
8 / 200-203	207.00	0,320 (0,71)	0,055 (0,19)	128.00	1.86	5 10 15	350-0200-0000
- / 225	232.00	0,285 (0,63)	0,050 (0,15)	143.00	2.08	5 10	350-0225-0000
- / 250	257.00	0,255 (0,57)	0,045 (0,12)	158.00	2.31	5 10	350-0250-0000
10 / 254	261.00	0,250 (0,56)	0,045 (0,11)	160.00	2.14	5 10 15	350-0254-0000
- / 275	282.00	0,230 (0,51)	0,040 (0,09)	173.00	2.54	5 10	350-0275-0000
11 / 280	287.00	0,230 (0,51)	0,040 (0,09)	176.00	2.59	5 10	350-0280-0000
- / 300	307.00	0,215 (0,47)	0,035 (0,08)	188.00	2.77	5 10	350-0300-0000
12 / 305	312.00	0,210 (0,46)	0,035 (0,07)	191.00	2.81	5 10	350-0305-0000
- / 350	357.00	0,185 (0,40)	0,030 (0,05)	218.00	3.22	5 10	350-0350-0000
14 / 356	363.00	0,180 (0,40)	0,030 (0,06)	222.00	3.34	5 10	350-0356-0000
- / 400	407.00	0,160 (0,35)	0,030 (0,05)	248.00	4.17	5 10	350-0400-0000
- / 450	457.00	0,140 (0,32)	0,025 (0,04)	281.00	4.69	5 10	350-0450-0000
- / 500	507.00	0,130 (0,28)	0,025 (0,03)	313.00	5.20	5 10	350-0500-0000

**neutral imprint: <ID> antistatic + microbe resistant <neutral batch no.> / no cutting**

1,5 / 38	45.00	1,635 (3,64)	0,495 (1,00)	31.00	0.31	10	350-0038-0007
- / 40	47.00	1,555 (3,46)	0,470 (1,00)	32.00	0.33	10	350-0040-0007
2 / 50-51	57.00	1,250 (2,78)	0,380 (1,00)	38.00	0.40	10	350-0050-0007
2,36 / 60	67.00	1,050 (2,33)	0,315 (0,83)	44.00	0.48	10	350-0060-0007
2,5 / 63-65	70.00	0,970 (2,15)	0,290 (0,71)	47.00	0.52	10	350-0065-0007
- / 70	77.00	0,900 (2,00)	0,185 (0,83)	50.00	0.56	10	350-0070-0007
- / 75	82.00	0,840 (1,87)	0,175 (0,72)	53.00	0.59	10	350-0075-0007
- / 80	87.00	0,790 (1,75)	0,160 (0,64)	56.00	0.64	10	350-0080-0007
4 / 100-102	107.00	0,635 (1,41)	0,135 (0,66)	68.00	0.80	10	350-0100-0007
4,72 / 120	127.00	0,530 (1,17)	0,115 (0,46)	80.00	0.95	10	350-0120-0007
5 / 125-127	132.00	0,510 (1,13)	0,110 (0,42)	83.00	0.98	10	350-0125-0007
5,5 / 140	147.00	0,455 (1,01)	0,095 (0,33)	92.00	1.09	10	350-0140-0007
6 / 150-152	157.00	0,425 (0,94)	0,075 (0,36)	98.00	1.40	10	350-0150-0007
6,3 / 160	167.00	0,400 (0,88)	0,070 (0,31)	104.00	1.50	10	350-0160-0007
7 / 178-180	187.00	0,355 (0,78)	0,060 (0,24)	116.00	1.67	10	350-0180-0007
8 / 200-203	207.00	0,320 (0,71)	0,055 (0,19)	128.00	1.86	10	350-0200-0007

## Accessories



CONNECT DAIRY  
FITTING 247



CONNECT THREAD  
FITTING 234



CONNECT ASEPTIC  
FITTING 249



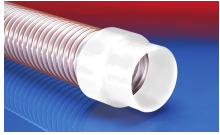
CONNECT 223



CONNECT TRI-  
CLAMP FITTING 245



CONNECT MOULD  
ASSEMBLY 233



CONNECT 240 + 241  
FOOD



CLAMP 213



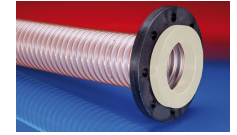
CONNECT 228



CONNECT 270-271



CLAMP 212



CONNECT 244  
FOOD



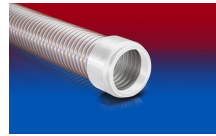
CONNECT 246  
FOOD



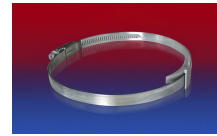
CLAMP 217



CONNECT 243  
FOOD



CONNECT 245  
FOOD



CLAMP 210 BRIDGE  
CLAMP