

Food hose and pharmaceutical hose, heavy

Application

- flexible hose/ ducting for high throughput of abrasive powder, bulk material, granulate and for gases
- food industry, pharmaceutical industry: foodstuff, pharmaceutical
- conveying of dry foods e.g. rice, cereals, sugar, milk powder, powders, coffee, tea, grains, flour, frozen foods
- vacuum conveying equipment, vacuum hopper, suction conveyor, dosing system
- pelleting machines/ tablet presses
- mixer, dryer, packaging machine, bulk-bag (big bag)-charging and discharging, mill
- airport, airplane, rail vehicle, train, railway, boat, ship/ vessel, yacht: toilet discharging/ disposal
- industrial vacuum cleaners, vacuum cleaners
- agricultural industry: pneumatic grain conveyer
- animal stall, animal shed: feedstuff conveying, feedstuff plant, animal feed transport
- paper mill, paper and pulp industry: waste water, air extraction
- industrial washing machine: washing water hose

Properties

- heavy duty
- highly abrasion resistant
- increased pressure and vacuum resistance
- Approved by an independent testing laboratory for the complete hose acc. to EU-Directive 10/2011 and EC 1935/2004 and the latest EU-Directive 2015/174, food grade polyurethane, complies with: FDA 21 CFR 177.2600 and 178.2010
- Approval acc. to EU-Directive 10/2011 (food simulants A, B, C or E and D2) and EC 1935/2004
- odourless and tasteless
- microbe and hydrolysis resistant
- good resistance to oil, gasoline and chemicals
- very good low temperature flexibility
- flame-retardant according to: UL94-V2
- manufacturing process acc. GMP EC 2023/2006
- conforms to RoHS guideline

- REACH according to --> Technology / Technical Information / REACH

Temperature Range

- 40 °C to 90 °C
- short time to 125 °C

Design

- AIRDUC® profile hose
- spring steel wire firmly embedded in wall
- wall: special premium ether-polyurethane (Pre-PUR®)
- wall thickness 1,4 - 1,5 mm approx.

Delivery variants

- further diameters and lengths available on request
- transparent (standard)
- customer-specific branding

| I.D. (in / mm) | outer Ø (mm) | Pressure DIN 26057 (50% Elongation) (bar) | Vacuum DIN 26057 (axially fixed) (bar) | Bending Radius (mm) | Weight (kg/m) | Minimum Quantity (m) | Dimensions in Stock (m) | Production Lengths (m) | Order No. |
|-------------------|-----------------|---|---|---------------------------|------------------|----------------------------|-------------------------------|------------------------------|---------------|
| standard | | | | | | | | | |
| - / 13 | 20.00 | 4,500 (8,59) | 1,000 (1,00) | 14.00 | 0.14 | - | 5 10 15 | - | 355-0013-1001 |
| 5/8 / 16 | 23.00 | 4,410 (7,14) | 1,000 (1,00) | 15.00 | 0.16 | - | 5 10 15 | - | 355-0016-1001 |
| - / 20 | 27.00 | 4,250 (6,88) | 1,000 (1,00) | 17.00 | 0.23 | - | 5 10 15 | - | 355-0020-1001 |
| - / 22 | 29.00 | 3,900 (6,31) | 0,950 (1,00) | 18.00 | 0.25 | - | 5 10 15 | - | 355-0022-1001 |
| 1 / 25 | 32.00 | 3,470 (5,61) | 0,900 (1,00) | 20.00 | 0.28 | - | 5 10 15 | - | 355-0025-1001 |
| - / 30 | 40.00 | 3,600 (5,82) | 0,880 (1,00) | 25.00 | 0.42 | - | 5 10 15 | - | 355-0030-1001 |
| 1,25 / 32 | 42.00 | 3,395 (5,49) | 0,875 (1,00) | 26.00 | 0.44 | - | 5 10 15 | - | 355-0032-1001 |
| 1,36 / 35 | 45.00 | 3,125 (5,05) | 0,870 (1,00) | 28.00 | 0.48 | - | 5 10 15 | - | 355-0035-1001 |
| 1,5 / 38 | 48.00 | 2,895 (4,68) | 0,865 (1,00) | 29.00 | 0.52 | - | 5 10 15 20 | - | 355-0038-1001 |
| - / 40 | 50.00 | 2,760 (4,46) | 0,855 (1,00) | 30.00 | 0.54 | - | 5 10 15 | - | 355-0040-1001 |
| 1,75 / 44-45 | 55.00 | 2,470 (3,99) | 0,845 (1,00) | 33.00 | 0.60 | - | 5 10 15 | - | 355-0045-1001 |
| 2 / 50-51 | 60.00 | 2,235 (3,61) | 0,835 (1,00) | 35.00 | 0.66 | - | 5 10 15 | - | 355-0050-1001 |
| - / 55 | 65.00 | 2,045 (3,30) | 0,790 (1,00) | 38.00 | 0.72 | - | 5 10 15 | - | 355-0055-1001 |
| 2,36 / 60 | 70.00 | 1,880 (3,03) | 0,730 (1,00) | 40.00 | 0.78 | - | 5 10 15 | - | 355-0060-1001 |



| I.D. | outer Ø | Pressure DIN 26057 (50% Elongation) | Vacuum DIN 26057 (axially fixed) | Bending Radius | Weight | Minimum Quantity | Dimensions in Stock | Production Lengths | Order No. |
|---------------|---------|--|--|-------------------|--------|---------------------|------------------------|-----------------------|---------------|
| (in / mm) | (mm) | (bar) | (bar) | (mm) | (kg/m) | (m) | (m) | (m) | |
| 2,5 / 63-65 | 75.00 | 1,740 (2,81) | 0,675 (1,00) | 43.00 | 0.84 | - | 5 10 15 | - | 355-0065-1001 |
| - / 70 | 81.00 | 1,620 (2,61) | 0,605 (1,00) | 62.00 | 0.98 | - | 5 10 15 | - | 355-0070-1001 |
| 3 / 75-76 | 86.00 | 1,515 (2,45) | 0,555 (1,00) | 66.00 | 1.05 | - | 5 10 | - | 355-0075-1001 |
| - / 80 | 91.00 | 1,425 (2,30) | 0,505 (1,00) | 69.00 | 1.11 | - | 5 10 | - | 355-0080-1001 |
| 3,5 / 89-90 | 101.00 | 1,270 (2,05) | 0,385 (0,89) | 76.00 | 1.25 | - | 5 10 15 | - | 355-0090-1001 |
| 4 / 100-102 | 111.00 | 1,150 (1,85) | 0,355 (0,95) | 83.00 | 1.49 | - | 5 10 15 | - | 355-0100-1001 |
| - / 110 | 121.00 | 1,045 (1,69) | 0,325 (0,78) | 90.00 | 1.63 | - | 5 10 15 | - | 355-0110-1001 |
| 4,5 / 114-115 | 126.00 | 1,000 (1,61) | 0,300 (0,71) | 94.00 | 1.68 | - | 5 10 15 | - | 355-0115-1001 |
| 4,72 / 120 | 131.00 | 0,960 (1,55) | 0,280 (0,65) | 97.00 | 1.77 | - | 5 10 15 | - | 355-0120-1001 |
| 5 / 125-127 | 136.00 | 0,925 (1,49) | 0,265 (0,60) | 101.00 | 1.84 | - | 5 10 15 | - | 355-0125-1001 |
| - / 130 | 141.00 | 0,890 (1,43) | 0,240 (0,56) | 104.00 | 1.91 | - | 5 10 15 | - | 355-0130-1001 |
| 5,5 / 140 | 151.00 | 0,825 (1,33) | 0,215 (0,48) | 111.00 | 2.03 | - | 5 10 15 | - | 355-0140-1001 |
| 6 / 150-152 | 161.00 | 0,770 (1,24) | 0,180 (0,56) | 118.00 | 2.41 | - | 5 10 15 | - | 355-0150-1001 |
| 6,3 / 160 | 171.00 | 0,725 (1,17) | 0,165 (0,49) | 125.00 | 2.56 | - | 5 10 15 | - | 355-0160-1001 |
| 6,5 / 165 | 176.00 | 0,705 (1,13) | 0,160 (0,46) | 129.00 | 2.64 | - | 5 10 15 | - | 355-0165-1001 |
| 7 / 178-180 | 191.00 | 0,645 (1,04) | 0,135 (0,39) | 139.00 | 2.87 | - | 5 10 15 | - | 355-0180-1001 |
| 8 / 200-203 | 213.00 | 0,580 (0,94) | 0,120 (0,35) | 156.00 | 3.12 | - | 5 10 | - | 355-0200-1001 |
| - / 250 | 263.00 | 0,465 (0,75) | 0,075 (0,21) | 191.00 | 3.88 | - | 5 10 | - | 355-0250-1001 |
| - / 300 | 313.00 | 0,390 (0,63) | 0,065 (0,19) | 226.00 | 5.16 | - | 5 10 | - | 355-0300-1001 |

blue translucent; not foodgrade; not flame-retardant

| | | | | | | | | | |
|-------------|--------|--------------|--------------|--------|------|-----|---|---------|---------------|
| 5 / 125-127 | 136.00 | 0,925 (1,49) | 0,265 (0,60) | 101.00 | 1.84 | 100 | - | 5 10 15 | 355-0125-0275 |
| 6 / 150-152 | 161.00 | 0,770 (1,24) | 0,180 (0,56) | 139.00 | 2.87 | 80 | - | 5 10 15 | 355-0150-0275 |
| 7 / 178-180 | 191.00 | 0,645 (1,04) | 0,135 (0,39) | 156.00 | 2.87 | 80 | - | 5 10 15 | 355-0180-0275 |
| 8 / 200-203 | 213.00 | 0,580 (0,94) | 0,120 (0,35) | 156.00 | 3.12 | 60 | - | 5 10 | 355-0200-0275 |
| 10 / 254 | 267.00 | 0,460 (0,74) | 0,074 (0,20) | 194.00 | 3.98 | 40 | - | 5 10 | 355-0254-0275 |

Accessories



CONNECT SAFETY
CLAMP ASSEMBLY
231



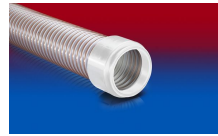
CONNECT MOULD
ASSEMBLY 233



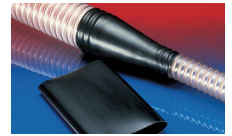
CONNECT ASEPTIC
FITTING 249



CONNECT THREAD
FITTING 234



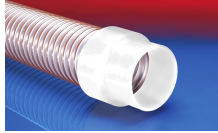
CONNECT 245
FOOD



CONNECT 223



CONNECT PRESS
ASSEMBLY 232



CONNECT 240 + 241
FOOD



CLAMP 212 EC



CLAMP 212



CONNECT 228



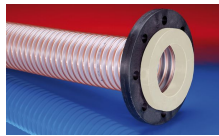
CLAMP 217



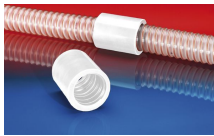
CONNECT 270-271



CONNECT DAIRY
FITTING 247



CONNECT 244
FOOD



CONNECT 246
FOOD



CONNECT 243
FOOD



CLAMP 216



CONNECT TRI-
CLAMP FITTING 245



CLAMP 213