

TPE hose, medium-heavy (up to +150°C)

Application

- flexible hose/ ducting for hot and cold gases and for powder, bulk material, granulate
- granulate/ plastic dryer, hot air dryer
- film blowing machine, cooling air at the extrusion tool
- textile industry, steam soaking: steam iron, industrial ironing machine, smoothing iron
- air supply: UV dryer, IR dryer
- bus, utility vehicle, caravan/ trailer, mobile home/ camper/ RV, boat, ship/ vessel/ marine, yacht: ventilation, heating
- compressor, side channel blower, vacuum pump, pressure pump, pump
- paper mill, paper and pulp industry: waste water, air extraction
- heating system/ heater: fresh air supply

Properties

Properties

- medium-heavy duty
- very good heat resistance
- good resistance to oil, gasoline and chemicals
- good resistance to alkalis and acids
- conforms to RoHS guideline
- Variant 2528 acc. to table: permanently antistatic wall: according to ISO 8031 electrical and surface resistance $<10^9 \Omega$ (according to NFPA 652 10^8 - $10^9 \Omega$)
- REACH according to --> Technology / Technical Information / REACH

Temperature Range

- 40°C to 125°C
- short time to 150°C

Design

- AIRDUC® profile hose
- spring steel wire firmly embedded in wall
- Wall: thermoplastic rubber (TPE) (US version: antistatic thermoplastic rubber)
- wall thickness 0,8 mm approx.

Delivery variants

- further diameters and lengths available on request
- black (standard)
- special colours: full coloured
- customer-specific branding

I.D.	outer Ø	Pressure	Vacuum	Bending Radius	Weight	Dimensions in Stock	Production Lengths	Order No.
(in / mm)	(mm)	(bar)	(bar)	(mm)	(kg/m)	(m)	(m)	
standard								
- / 30	38.00	0,930	0,195	23.00	0.21	10	-	363-0030-0000
1,25 / 32	40.00	0,870	0,190	24.00	0.25	10	-	363-0032-0000
1,5 / 38	46.00	0,740	0,175	27.00	0.29	10	-	363-0038-0000
- / 40	48.00	0,705	0,170	28.00	0.30	10	-	363-0040-0000
1,75 / 44-45	53.00	0,630	0,160	31.00	0.33	10	-	363-0045-0000
2 / 50-51	58.00	0,565	0,150	33.00	0.37	10	-	363-0050-0000
2,36 / 60	68.00	0,475	0,115	38.00	0.45	10	-	363-0060-0000
2,5 / 63-65	73.00	0,440	0,100	41.00	0.49	10	-	363-0065-0000
- / 70	78.00	0,410	0,085	43.00	0.53	10	-	363-0070-0000
3 / 75-76	83.00	0,380	0,080	46.00	0.56	10	-	363-0075-0000
- / 80	88.00	0,360	0,070	48.00	0.59	10	-	363-0080-0000
3,5 / 89-90	98.00	0,320	0,065	53.00	0.67	10	-	363-0090-0000
4 / 100-102	108.00	0,290	0,050	58.00	0.74	10	-	363-0100-0000
- / 110	118.00	0,260	0,045	63.00	0.81	10	-	363-0110-0000
5 / 125-127	133.00	0,230	0,035	71.00	0.91	10	-	363-0125-0000
- / 130	138.00	0,220	0,035	73.00	0.95	10	-	363-0130-0000
6 / 150-152	158.00	0,195	0,035	83.00	1.10	10	-	363-0150-0000
7 / 178-180	188.00	0,160	0,025	98.00	1.29	10	-	363-0180-0000
8 / 200-203	208.00	0,145	0,025	108.00	1.44	10	-	363-0200-0000
- / 225	233.00	0,130	0,020	121.00	1.63	10	-	363-0225-0000



I.D.	outer Ø	Pressure	Vacuum	Bending Radius	Weight	Dimensions in Stock	Production Lengths	Order No.
(in / mm)	(mm)	(bar)	(bar)	(mm)	(kg/m)	(m)	(m)	
- / 250	258.00	0,115	0,020	133.00	1.81	10	-	363-0250-0000
Standard version USA - antistatic version								
1,25 / 32	40.00	0,870	0,190	24.00	0.21	-	10	363-0032-2528
1,5 / 38	46.00	0,740	0,175	27.00	0.29	-	10	363-0038-2528
1,75 / 44-45	53.00	0,630	0,160	31.00	0.33	-	10	363-0045-2528
2 / 50-51	58.00	0,565	0,150	33.00	0.37	-	10	363-0050-2528
2,25 / 57	0.00	-	-	0.00	0.00	-	10	363-0057-2528
2,5 / 63-65	73.00	0,440	0,100	41.00	0.49	-	10	363-0065-2528
3 / 75-76	83.00	0,380	0,080	46.00	0.56	-	10	363-0075-2528
3,5 / 89-90	98.00	0,320	0,065	53.00	0.67	-	10	363-0090-2528
4 / 100-102	108.00	0,290	0,050	58.00	0.74	-	10	363-0100-2528
4,5 / 114-115	0.00	-	-	0.00	0.00	-	10	363-0115-2528
5 / 125-127	133.00	0,230	0,035	71.00	0.91	-	10	363-0125-2528
5,5 / 140	0.00	-	-	0.00	0.00	-	10	363-0140-2528
6 / 150-152	158.00	0,195	0,035	83.00	1.10	-	10	363-0150-2528
7 / 178-180	188.00	0,160	0,025	98.00	1.29	-	10	363-0180-2528
8 / 200-203	208.00	0,145	0,050	108.00	1.44	-	10	363-0200-2528
9 / 228-229	0.00	-	-	0.00	0.00	-	10	363-0228-2528
10 / 254	0.00	-	-	0.00	0.00	-	10	363-0254-2528
12 / 305	0.00	-	-	0.00	0.00	-	10	363-0305-2528
14 / 356	0.00	-	-	0.00	0.00	-	10	363-0356-2528
16 / 405-406	0.00	-	-	0.00	0.00	-	10	363-0406-2528
18 / 457	0.00	-	-	0.00	0.00	-	10	363-0457-2528

Accessories



CONNECT 223



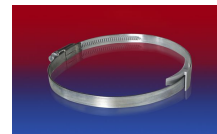
CONNECT 270-271



CLAMP 217



CLAMP 213



CLAMP 210 BRIDGE CLAMP



CONNECT 228