

PVC air conditioning hose, insulated, flame resistant, grey

Application

- flexible hose/ ducting for gases
- air conditioning
- thermal and acoustic insulation

Properties

- fabric reinforced
- highly flexible + compressible 6:1
- insulating

- flame-retardant according to: class 1 (Italy)
- conforms to RoHS guideline

Temperature Range

- 10°C to 110°C

Design

- PROTAPE® tape hose
- spring steel wire integrated in wall
- wall: PVC coated fabric

- special thermal insulation layer
- polyester insulation thickness 25 mm and weight 300 g/m²
- Pressure max. 200 mm H₂O
- Air speed max. 20 m/s
- bending radius 0,6 x ID

Delivery variants

- further diameters and lengths available on request
- grey (standard)

I.D.	outer Ø	Bending Radius	Weight	Dimensions in Stock	Production Lengths	Order No.
(in / mm)	(mm)	(mm)	(kg/m)	(m)	(m)	
3 / 75-76	126.60	46.00	0.25	-	5 6 10	368-0076-3500
- / 82	132.60	49.00	0.28	10	5 6	368-0082-3500
3,5 / 89-90	140.60	54.00	0.30	-	5 6 10	368-0090-3500
4 / 100-102	152.60	61.00	0.31	10	5 6	368-0102-3500
- / 110	160.60	66.00	0.33	-	5 6 10	368-0110-3500
4,72 / 120	171.60	72.00	0.36	-	5 6 10	368-0120-3500
5 / 125-127	177.60	76.00	0.37	10	5 6	368-0127-3500
5,5 / 140	190.60	84.00	0.41	-	5 6 10	368-0140-3500
6 / 150-152	202.60	91.00	0.45	10	5 6	368-0152-3500
6,3 / 160	210.60	96.00	0.47	10	5 6	368-0160-3500
7 / 178-180	230.60	108.00	0.52	10	5 6	368-0180-3500
8 / 200-203	253.60	122.00	0.62	10	5 6	368-0203-3500
9 / 228-229	278.60	137.00	0.70	-	5 6 10	368-0228-3500
10 / 254	304.60	152.00	0.82	10	5 6	368-0254-3500
11 / 280	330.60	168.00	0.85	-	5 6 10	368-0280-3500
12 / 305	355.60	183.00	0.92	10	5 6	368-0305-3500
- / 315	365.60	189.00	0.88	10	5 6	368-0315-3500
14 / 356	406.60	214.00	1.00	10	5 6	368-0356-3500
16 / 405-406	456.60	244.00	1.12	10	5 6	368-0406-3500
18 / 457	507.60	274.00	1.33	10	5 6	368-0457-3500
20 / 508	558.60	305.00	1.48	10	5 6	368-0508-3500
22 / 560	610.60	336.00	1.63	-	5 6 10	368-0560-3500
24 / 610	660.60	366.00	1.77	10	5 6	368-0610-3500

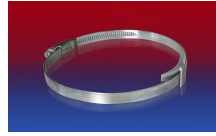
Accessories



CONNECT 270-271



CONNECT 228



CLAMP 210 BRIDGE CLAMP



CLAMP 208