

Antistatic polyurethane hose, light, microbe resistant + flame-resistant

### Application

- flexible hose/ ducting for gases and for abrasive dust, powder, fibres
- printed circuit board drilling machine (PCB)
- extraction unit, dedusting system, filter system, oil mist extraction
- extraction arm
- chemical industry: chemical vapours, vapour return hose at loading arm, paint steam, spray mist extraction
- explosion hazard area
- animal stall, animal shed: barn ventilation
- clean room ventilation, semiconductor production machine
- surface preparation: shot blasting/ sand blasting recovery e.g. at blasting chamber, ship yard, stripping machine, flooring preparation machine, grinding machine
- heating hose: exterior hose as protection hose

### Properties

- lightweight and reinforced

- lightweight and reinforced
- highly flexible + compressible 3:1
- abrasion-resistant
- microbe resistant
- good resistance to oil, gasoline and chemicals
- very good low temperature flexibility
- flame-retardant according to: UL94-HB
- flame-retardant according to: DIN 4102-B1
- permanently antistatic wall: according to ISO 8031 electrical and surface resistance  $<10^9 \Omega$  (according to NFPA 652  $10^8$ - $10^9 \Omega$ )
- in accordance with ATEX 2014/34/EU (1999/92/EC) and German TRGS 727: aspiration of combustible dust (zone 22 inside), for conveying of non-flammable liquids, for use in zone 1 and 2 (gases)
- conforms to the safety regulations of the German Wood Trade Association
- conforms to RoHS guideline
- REACH according to --> Technology / Technical Information / REACH

- 40 °C to 90 °C
- short time to 125 °C

### Design

- patented PROTAPE® tape hose
- spring steel wire integrated in wall
- wall: permanently antistatic premium ester-polyurethane (Pre-PUR®)
- wall thickness 0,6 mm approx.

### Delivery variants

- further diameters and lengths available on request
- transparent (standard)
- special colours: partially coloured, completely coloured
- customer-specific branding

I.D. (in / mm)	outer Ø (mm)	Pressure DIN 26057 (50% Elongation) (bar)	Vacuum DIN 26057 (axially fixed) (bar)	Bending Radius (mm)	Weight (kg/m)	Minimum Quantity (m)	Dimensions in Stock (m)	Order No.
<b>standard</b>								
1 / 25	32.00	1,605 (4,18)	0,540 (1,00)	20.00	0.15	-	5 10 15	330-0025-1002
- / 30	37.00	1,350 (3,50)	0,450 (1,00)	22.00	0.18	-	5 10 15	330-0030-1002
1,25 / 32	39.00	1,265 (3,29)	0,420 (1,00)	23.00	0.19	-	5 10 15	330-0032-1002
1,5 / 38	45.00	1,075 (2,78)	0,355 (0,77)	26.00	0.22	-	5 10 15	330-0038-1002
- / 40	47.00	1,020 (2,64)	0,335 (0,69)	27.00	0.23	-	5 10 15	330-0040-1002
2 / 50-51	58.00	0,820 (2,12)	0,220 (0,87)	33.00	0.37	-	5 10 15	330-0050-1002
2,36 / 60	68.00	0,685 (1,77)	0,180 (0,61)	38.00	0.43	-	5 10 15	330-0060-1002
2,5 / 63-65	73.00	0,635 (1,64)	0,165 (0,52)	41.00	0.46	-	5 10 15	330-0065-1002
- / 70	78.00	0,590 (1,52)	0,155 (0,45)	43.00	0.50	-	5 10 15	330-0070-1002
3 / 75-76	83.00	0,550 (1,42)	0,145 (0,40)	46.00	0.53	-	5 10 15	330-0075-1002
- / 80	88.00	0,515 (1,33)	0,135 (0,35)	48.00	0.57	-	5 10 15	330-0080-1002
3,5 / 89-90	98.00	0,460 (1,19)	0,120 (0,28)	53.00	0.63	-	5 10 15	330-0090-1002
4 / 100-102	108.00	0,415 (1,07)	0,080 (0,31)	58.00	0.67	-	5 10 15	330-0100-1002
- / 110	118.00	0,375 (0,97)	0,070 (0,26)	63.00	0.73	-	5 10 15	330-0110-1002
4,5 / 114-115	123.00	0,360 (0,93)	0,070 (0,24)	66.00	0.76	-	5 10 15	330-0115-1002
4,72 / 120	128.00	0,345 (0,89)	0,065 (0,22)	68.00	0.79	-	5 10 15	330-0120-1002
5 / 125-127	133.00	0,335 (0,86)	0,065 (0,20)	71.00	0.83	-	5 10 15	330-0125-1002



I.D.	outer Ø	Pressure DIN 26057 (50% Elongation)	Vacuum DIN 26057 (axially fixed)	Bending Radius	Weight	Minimum Quantity	Dimensions in Stock	Order No.
(in / mm)	(mm)	(bar)	(bar)	(mm)	(kg/m)	(m)	(m)	
- / 130	138.00	0,320 (0,82)	0,060 (0,19)	73.00	0.86	-	5 10 15	330-0130-1002
5,5 / 140	148.00	0,295 (0,76)	0,055 (0,16)	78.00	0.92	-	5 10 15	330-0140-1002
6 / 150-152	158.00	0,275 (0,71)	0,055 (0,14)	83.00	0.99	-	5 10 15	330-0150-1002
6,3 / 160	168.00	0,260 (0,67)	0,050 (0,12)	88.00	1.05	-	5 10 15	330-0160-1002
- / 170	178.00	0,245 (0,63)	0,045 (0,11)	93.00	1.11	-	5 10 15	330-0170-1002
- / 175	183.00	0,240 (0,61)	0,045 (0,10)	96.00	1.14	-	5 10 15	330-0175-1002
7 / 178-180	188.00	0,230 (0,59)	0,045 (0,10)	98.00	1.17	-	5 10 15	330-0180-1002
8 / 200-203	208.00	0,210 (0,54)	0,030 (0,11)	108.00	1.33	-	5 10 15	330-0200-1002
- / 225	233.00	0,185 (0,48)	0,025 (0,09)	121.00	1.48	-	5 10	330-0225-1002
- / 250	258.00	0,165 (0,43)	0,025 (0,07)	133.00	1.64	-	5 10	330-0250-1002
10 / 254	262.00	0,165 (0,42)	0,025 (0,06)	135.00	1.66	-	5 10	330-0254-1002
11 / 280	288.00	0,150 (0,38)	0,020 (0,05)	148.00	1.83	-	5 10	330-0280-1002
- / 300	309.00	0,140 (0,36)	0,020 (0,05)	159.00	2.14	-	5 10	330-0300-1002
12 / 305	314.00	0,135 (0,35)	0,020 (0,05)	162.00	2.17	-	5 10	330-0305-1002
- / 315	324.00	0,135 (0,34)	0,020 (0,05)	167.00	2.24	-	5 10	330-0315-1002
- / 350	359.00	0,120 (0,31)	0,020 (0,04)	184.00	2.49	-	5 10	330-0350-1002
14 / 356	365.00	0,115 (0,30)	0,015 (0,03)	187.00	2.53	-	5 10	330-0356-1002
- / 400	409.00	0,105 (0,27)	0,015 (0,02)	209.00	2.84	-	5 10	330-0400-1002
- / 450	459.00	0,095 (0,24)	0,015 (0,02)	234.00	3.19	-	5 10	330-0450-1002
- / 500	510.00	0,085 (0,21)	0,015 (0,02)	260.00	4.39	-	5 10	330-0500-1002

neutral imprint: <ID> antistatic + microbe resistant <neutral batch no.> / no cutting

1,5 / 38	45.00	1,075 (2,78)	0,355 (0,77)	26.00	0.22	-	10	330-0038-0007
- / 40	47.00	1,020 (2,64)	0,335 (0,69)	27.00	0.23	-	10	330-0040-0007
2 / 50-51	58.00	0,820 (2,12)	0,220 (0,87)	33.00	0.37	-	10	330-0050-0007
2,36 / 60	68.00	0,685 (1,77)	0,180 (0,61)	38.00	0.43	-	10	330-0060-0007
2,5 / 63-65	73.00	0,635 (1,64)	0,165 (0,52)	41.00	0.46	-	10	330-0065-0007
- / 70	78.00	0,590 (1,52)	0,155 (0,45)	43.00	0.50	-	10	330-0070-0007
3 / 75-76	83.00	0,550 (1,42)	0,145 (0,40)	46.00	0.53	-	10	330-0075-0007
- / 80	88.00	0,515 (1,33)	0,135 (0,35)	48.00	0.57	-	10	330-0080-0007
4 / 100-102	108.00	0,415 (1,07)	0,080 (0,31)	58.00	0.67	-	10	330-0100-0007
4,72 / 120	128.00	0,345 (0,89)	0,065 (0,22)	68.00	0.79	-	10	330-0120-0007
5 / 125-127	133.00	0,335 (0,86)	0,065 (0,20)	71.00	0.83	-	10	330-0125-0007
5,5 / 140	148.00	0,295 (0,76)	0,055 (0,16)	78.00	0.92	-	10	330-0140-0007
6 / 150-152	158.00	0,275 (0,71)	0,055 (0,14)	83.00	0.99	-	10	330-0150-0007
6,3 / 160	168.00	0,260 (0,67)	0,050 (0,12)	88.00	1.05	-	10	330-0160-0007
7 / 178-180	188.00	0,230 (0,59)	0,045 (0,10)	98.00	1.17	-	10	330-0180-0007
8 / 200-203	208.00	0,210 (0,54)	0,030 (0,11)	108.00	1.33	-	10	330-0200-0007
- / 225	233.00	0,185 (0,48)	0,025 (0,09)	121.00	1.48	-	10	330-0225-0007
- / 250	256.00	0,165 (0,43)	0,025 (0,07)	133.00	1.64	-	10	330-0250-0007
- / 300	309.00	0,140 (0,36)	0,020 (0,05)	159.00	2.14	-	10	330-0300-0007

more compressed packaging approx. 4:1, neutral imprint, no cutting

1,5 / 38	45.00	1,075 (2,78)	0,355 (0,77)	26.00	0.19	150	-	330-0038-2030
- / 40	47.00	1,020 (2,64)	0,335 (0,69)	27.00	0.20	150	-	330-0040-2030
2 / 50-51	58.00	0,820 (2,12)	0,220 (0,87)	33.00	0.26	150	-	330-0050-2030
2,36 / 60	68.00	0,685 (1,77)	0,180 (0,61)	38.00	0.31	150	-	330-0060-2030
2,5 / 63-65	73.00	0,635 (1,64)	0,165 (0,52)	41.00	0.33	150	-	330-0065-2030
- / 70	78.00	0,590 (1,52)	0,155 (0,45)	43.00	0.39	150	-	330-0070-2030
3 / 75-76	83.00	0,550 (1,42)	0,145 (0,40)	46.00	0.38	100	-	330-0075-2030
- / 80	88.00	0,515 (1,33)	0,135 (0,35)	48.00	0.41	100	-	330-0080-2030
4 / 100-102	108.00	0,415 (1,07)	0,080 (0,31)	58.00	0.48	100	-	330-0100-2030

# PROTAPE® PUR 330 AS (LD)



I.D.	outer Ø	Pressure DIN 26057 (50% Elongation)	Vacuum DIN 26057 (axially fixed)	Bending Radius	Weight	Minimum Quantity	Dimensions in Stock	Order No.
(in / mm)	(mm)	(bar)	(bar)	(mm)	(kg/m)	(m)	(m)	
4,72 / 120	128.00	0,345 (0,89)	0,065 (0,22)	68.00	0.56	100	-	330-0120-2030
5 / 125-127	133.00	0,335 (0,86)	0,065 (0,20)	71.00	0.59	100	-	330-0125-2030
5,5 / 140	148.00	0,295 (0,76)	0,055 (0,16)	78.00	0.65	80	-	330-0140-2030
6 / 150-152	158.00	0,275 (0,71)	0,055 (0,14)	83.00	0.70	80	-	330-0150-2030
6,3 / 160	168.00	0,260 (0,67)	0,050 (0,12)	88.00	0.74	80	-	330-0160-2030
7 / 178-180	188.00	0,230 (0,59)	0,045 (0,10)	98.00	0.83	80	-	330-0180-2030
8 / 200-203	208.00	0,210 (0,54)	0,030 (0,11)	108.00	0.93	60	-	330-0200-2030
- / 225	233.00	0,185 (0,48)	0,025 (0,09)	121.00	1.03	60	-	330-0225-2030
- / 250	256.00	0,165 (0,43)	0,025 (0,07)	133.00	1.14	50	-	330-0250-2030
- / 300	309.00	0,140 (0,36)	0,020 (0,05)	159.00	1.47	40	-	330-0300-2030

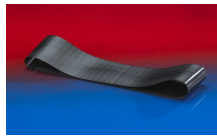
## Accessories



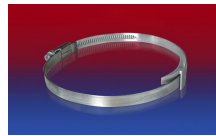
CONNECT 223



CONNECT 270-271



CONNECT 228



CLAMP 210 BRIDGE  
CLAMP



CLAMP 213



CLAMP 217



CLAMP 212