

Antistatic polyurethane hose, medium-heavy, microbe resistant, flame-resistant

Application

- flexible hose/ ducting for high throughput of abrasive powder, bulk material, granulate and for gases
- extraction unit, dedusting system, filter system, oil mist extraction
- compressor, side channel blower, vacuum pump, pressure pump, pump
- municipal vehicle: sweeper, sweeping machine
- municipal vehicle: lawn mower, slope mower, leaf blower/ leaf collector

Properties

- medium-heavy duty
- highly abrasion resistant
- increased pressure and vacuum resistance

- microbe resistant
- good resistance to oil, gasoline and chemicals
- very good low temperature flexibility
- flame-retardant according to: DIN 4102-B1
- permanently antistatic wall: in accordance with ISO 8031 electrical and surface resistance $<10^9 \Omega$
- conforms to RoHS guideline
- REACH according to --> Technology / Technical Information / REACH

Temperature Range

- 40 °C to 90 °C
- short time to 125 °C

Design

- patented PROTAPE® tape hose
- spring steel wire integrated in wall
- plastic coated spring steel wire
- wall: permanently antistatic premium ester-polyurethane (Pre-PUR®)
- wall thickness 0,9 mm approx.

Delivery variants

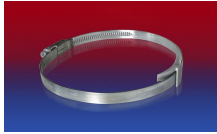
- further diameters and lengths available on request
- transparent (standard)
- Imprint: <ID> antistatic + microbe resistant + flame retardant <neutral batch no.>

| I.D. (in / mm) | outer Ø (mm) | Pressure DIN 26057 (50% Elongation) (bar) | Vacuum DIN 26057 (axially fixed) (bar) | Bending Radius (mm) | Weight (kg/m) | Dimensions in Stock (m) | Order No. |
|-------------------|-----------------|--|---|---------------------------|------------------|-------------------------------|---------------|
| - / 40 | 48.00 | 1,020 (2,640) | 0,505 (1,000) | 38.00 | 0.25 | 10 | 333-0040-0007 |
| 2 / 50-51 | 58.00 | 0,820 (2,120) | 0,415 (1,000) | 48.00 | 0.31 | 10 | 333-0050-0007 |
| 2,36 / 60 | 68.00 | 0,685 (1,770) | 0,350 (0,900) | 58.00 | 0.36 | 10 | 333-0060-0007 |
| 2,5 / 63-65 | 72.00 | 0,635 (1,635) | 0,320 (0,775) | 63.00 | 0.38 | 10 | 333-0065-0007 |
| - / 70 | 78.00 | 0,590 (1,520) | 0,300 (0,670) | 68.00 | 0.42 | 10 | 333-0070-0007 |
| 3 / 75-76 | 83.00 | 0,550 (1,420) | 0,280 (0,590) | 73.00 | 0.44 | 10 | 333-0075-0007 |
| - / 80 | 88.00 | 0,515 (1,330) | 0,260 (0,520) | 78.00 | 0.47 | 10 | 333-0080-0007 |
| 4 / 100-102 | 109.00 | 0,415 (1,070) | 0,110 (0,485) | 98.00 | 0.97 | 10 | 333-0100-0007 |
| 5 / 125-127 | 134.00 | 0,335 (0,855) | 0,090 (0,315) | 123.00 | 1.19 | 10 | 333-0125-0007 |
| 5,5 / 140 | 148.00 | 0,295 (0,765) | 0,080 (0,250) | 138.00 | 1.32 | 10 | 333-0140-0007 |
| 6 / 150-152 | 159.00 | 0,275 (0,715) | 0,075 (0,220) | 148.00 | 1.45 | 10 | 333-0150-0007 |
| 6,3 / 160 | 168.00 | 0,260 (0,670) | 0,070 (0,195) | 158.00 | 1.50 | 10 | 333-0160-0007 |
| 7 / 178-180 | 186.00 | 0,230 (0,595) | 0,060 (0,150) | 178.00 | 1.66 | 10 | 333-0180-0007 |
| 8 / 200-203 | 210.00 | 0,210 (0,535) | 0,055 (0,125) | 198.00 | 1.89 | 10 | 333-0200-0007 |
| - / 250 | 258.00 | 0,165 (0,430) | 0,045 (0,095) | 248.00 | 2.32 | 10 | 333-0250-0007 |
| - / 300 | 308.00 | 0,140 (0,350) | 0,040 (0,065) | 298.00 | 2.78 | 10 | 333-0300-0007 |

Accessories



CLAMP 217



CLAMP 210 BRIDGE CLAMP



CONNECT 270-271



CLAMP 212



CONNECT 228



CONNECT 223



CLAMP 213