

TPE hose, light, fabric reinforced (up to +125°C)



Application

- flexible hose/ ducting for hot and cold gases
- granulate/ plastic dryer, hot air dryer
- film blowing machine, cooling air at the extrusion tool
- air supply: UV dryer, IR dryer
- textile industry, steam soaking: steam iron, industrial ironing machine, smoothing iron
- bus, utility vehicle, caravan/ trailer, mobile home/ camper/ RV, boat, ship/ vessel/ marine, yacht: ventilation, heating
- paper mill, paper and pulp industry: waste water, air extraction
- heating system/ heater: fresh air supply

Properties

- fabric reinforced

- fabric reinforced
- light weight
- highly flexible + compressible
- very good heat resistance
- conforms to RoHS guideline
- good resistance to oil, gasoline and chemicals
- good resistance to alkalis and acids
- REACH according to --> Technology / Technical Information / REACH

Temperature Range

- 40°C to 110°C
- short time to 125°C

- PROTAPE® tape hose
- spring steel wire integrated in wall
- fabric-reinforced tape
- wall: EPDM/ PP coated fabric
- wall thickness 0,4 mm approx.

Delivery variants

- further diameters and lengths available on request
- black (standard)
- special colours: full coloured
- customer-specific branding

I.D.	outer Ø	Pressure	Vacuum	Bending Radius	Weight	Dimensions in Stock	Order No.
(in / mm)	(mm)	(bar)	(bar)	(mm)	(kg/m)	(m)	
2 / 50-51	55.00	0,265	0,216	33.00	0.21	7,5 15	321-0050-0000
3 / 75-76	80.00	0,180	0,117	49.00	0.31	7,5 15	321-0075-0000
4 / 100-102	108.00	0,130	0,072	65.00	0.62	7,5 15	321-0100-0000
5 / 125-127	133.00	0,110	0,050	81.00	0.78	7,5 15	321-0125-0000
6 / 150-152	158.00	0,090	0,050	98.00	0.93	7,5 15	321-0150-0000
8 / 200-203	208.00	0,065	0,033	120.00	1.24	7,5 15	321-0200-0000
- / 250	259.00	0,055	0,015	150.00	1.75	7,5 15	321-0250-0000
- / 300	309.00	0,045	0,011	180.00	2.10	7,5 15	321-0300-0000

Accessories



CONNECT 228



CONNECT 270-271



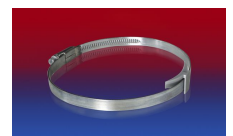
CLAMP 217



CLAMP 213



CLAMP 212



CLAMP 210 BRIDGE CLAMP



CONNECT 223